

# For Real Progress Vote Green



## About Norman Kay and Catherine Farrell... your Green Party candidates for Nailsworth

### Catherine Farrell:

I settled in Nailsworth ten years ago, having previously managed a large financial business. I volunteered at the Town Information Centre, where I was persuaded to run B&B accommodation to help the town economy. I participated in several 'Town Spring Cleans' and continue to do my own local litter picks. For six years I worked for the County Council developing economic, transport and environmental strategies, and organised public consultations. I led campaigns to improve our rail services, directed a major broadband project, and worked with the Regional Development Agency. I am now launching a local business. I believe this mix of working experience and integrity will serve me well in representing the various interests of the people of Nailsworth. I describe myself as a 'practical Green' - I make an effort to choose environmentally friendly options when possible. The recent cuts to public services highlight the injustice of the bonuses paid to bankers, while we continue to suffer the cost of bailing them out. The failure of the main political parties to address these issues demonstrates that a new approach is needed. If elected, I will work to help ensure that Nailsworth has a strong voice on the District Council, and that we work to conserve and develop our local services.



Catherine Farrell with Norman Kay supporting Nailsworth Library

### Norman Kay:

It has been my privilege to live in Nailsworth and Horsley for almost 30 years. I believe in giving something back to the community and have done this in various ways over the years. I have previously been a District Councillor and I was Mayor of Nailsworth for three years. As Mayor, I was effective in getting the fountain monument refurbished and moved to a prominent location, in getting the Nailsworth Games established, and (as Deputy Mayor) in helping to obtain the funding and services of our qualified youth worker. I continue to serve on the Town Council and the Youth Club Management Committee. I am a Cotswold Warden, responsible for checking the footpaths in Horsley, and I keep a small flock of rare breed Cotswold sheep. I participate in the weekly rota at the Horsley Community Shop and organise the annual British Legion poppy appeal for Nailsworth. I believe the Green Party has the best policies for developing localism, protecting the environment and pursuing social justice. We need councillors who will fight for Nailsworth and Horsley. In these difficult times our town has seen an unfair share of cuts - the library, youth club, recreation centre and other services. Sadly, the Tories, Labour and Lib Dems have contributed to these cuts. If elected I'll fight for the needs of Horsley and Nailsworth.

**Our outgoing Councillor Fi Macmillan says: "Nailsworth needs our Green candidates' belief in social and environmental justice and their knowledge of the community, business experience and creative abilities. Please vote for them to continue to represent your interests and values."**

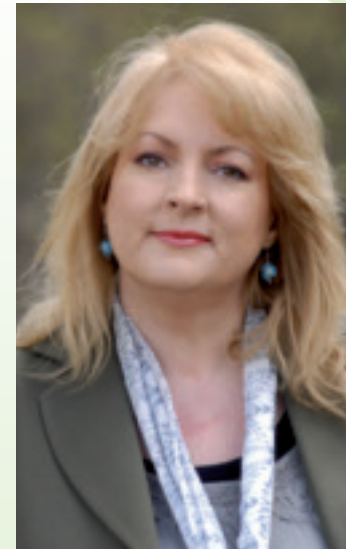
**Can you help us?** If you would like to help in our election campaign, please ring 01453 833458.

For more information visit: [www.stroudgreenparty.org.uk](http://www.stroudgreenparty.org.uk)

Printed by Severnprint Ltd, Ashville Industrial Estate, Gloucester, GL2 5EU. Severnprint operate using renewable energy, on-site waste management and renewable practices; they also use eco-friendly transport and donate to Tree Aid in Ghana. Promoted by John Marjoram, 8 Castle St, Stroud, Glos, GL5 2HP; on behalf of Catherine Farrell, 56 Highwood Drive, Nailsworth, Stroud, Glos, GL6 0BJ and Norman Kay, Rose Cottage, Wallow Green, Nailsworth, Glos, GL6 0PD.

Stroud District Election Communication from the Green Party

# Catherine Farrell Norman Kay



## Take a Stand Vote Green Now in Nailsworth Ward on Thursday May 5th

In Nailsworth and Horsley there are many reasons to vote for your Green Party candidates in the District Council elections.

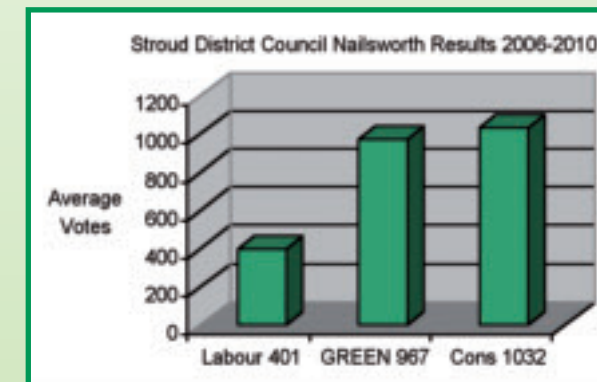
Only the Green Party has defeated the Tories in Nailsworth in recent years. We can do so again with your support.

The Green Party on the District Council has been a strong independent voice against cuts in services.

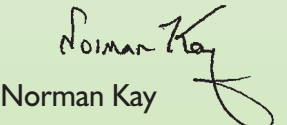
Norman Kay and Catherine Farrell are experienced and committed local people with a strong record of positive action.

*"I am delighted to have been chosen as the Green Party's candidate for the Nailsworth ward. Greens work for environmental and social justice and local solutions. I have been active in the Nailsworth community and now seek your approval to be your Stroud District Councillor."*

  
Catherine Farrell



*"I am honoured to be asked to stand. If elected I will continue Fi's excellent record of helping our residents, fighting to protect our communities against unfair cuts and improving our services. I am especially concerned about the lack of affordable housing in this area."*

  
Norman Kay

### Catherine and Norman's recent community activities include:

- Working with Cllr. Macmillan to improve evening leisure services at Nailsworth Primary School
- Getting the fountain monument refurbished and moved to a prominent location
- Taking a leading role in support of the Library and Youth Centre services
- Calling the Town Meeting to oppose the service cuts in the town
- Supporting sustainable services in our communities, monitoring footpaths and litter picking



Norman Kay, Rose Cottage, Wallow Green, Nailsworth, Glos, GL6 0PD. [normankay@hotmail.co.uk](mailto:normankay@hotmail.co.uk)  
Catherine Farrell, 56 Highwood Drive, Nailsworth, Stroud, Glos, GL6 0BJ. [catherine.farrell@live.co.uk](mailto:catherine.farrell@live.co.uk)